



PPV TRAINER

[USER'S MANUAL

ORIGINAL
USER'S MANUAL

Version 4.4
19/12/19



Contents

1	General description	2
2	Structural data and technical specifications	2
3	Use	4
4	Inspection and maintenance	6

1 General description

The Positive Pressure Ventilation Trainer is a wonderful tool giving you the possibility to demonstrate to your trainees in a didactically responsible manner how the theory relating to positive pressure ventilation should be applied in practice. The Positive Pressure Ventilation Trainer is modular in its structure, meaning that the training possibilities are virtually unlimited.

2 Structural data and technical specifications

General:

- Dimensions (LxWxH): 80 x 55 x 20 cm excluding control buttons.
84 x 57 x 20 cm including control buttons.
- Material: PMMA (acrylic glass).
- Colour: walls, clear; technical area, black; doors and roof (plus hatches), red
- Remote-controllable smoke generator.
- Remote control: made of PMMA plastic.
- Cable: 2 m.
- Option of connecting 2 fans (9 V-DC).
- Power: Smoke generator 250 W.
Power supply: 50 W.
Total 230 V. 300 VA

Module 1. Basement

Construction: 1. technical area.
2. cellar, featuring remote-controlled door to stairwell and cellar hatch.
3. stairwell.

Option of smoke in the cellar and stairwell.

Weight: 12 kg.

Module 2. Ground floor

Construction: Three rooms, hallway, garage and stairwell with remote-controlled doors.
All rooms feature openable windows.

Option of smoke in three rooms and in the garage.

Weight: 8 kg.

Module 3. First floor

Construction: Four rooms, two hallways with remote-controlled doors plus stairwell.
All rooms feature openable windows.

Option of smoke in three rooms and in the hallways.

Weight: 8 kg.

Module 4. Second floor

Construction: Six rooms, one hallway with remote-controlled doors plus stairwell.
Four rooms featuring openable windows.

Option of smoke in five rooms and in the hallway.

Weight: 8 kg.

Module 5. Sloping roof.

Construction: Attic area featuring one remote-controlled door, a remote-controlled attic hatch and four

openable attic windows plus stairwell. Stairwell features an openable window.
Option of smoke in attic area.
Weight: 6 kg

Module 6. Flat Roof.

Dimensions (LxWxH): 80 x 55 x 2 cm.
Featuring three remote-controlled roof hatches.
Weight: 2 kg.

Module 7. False ceiling.

Dimensions (LxWxH): 80 x 55 x 3 cm.
Featuring holes in various rooms that can be closed off.
Weight: 4 kg

Flight case

Dimensions (LxWxH): 88 x 62 x 30 cm.
Weight: 15 kg



3 Use

Only use in areas with good ventilation.

The PPV Trainer must be positioned on a flat surface to ensure that no tension is caused in the modules. PMMA is a breakable material, prevent bumping and falling!

Once the modules have been put together (ensuring that the central points are in the correct positions), the socket panel can be connected.

Connect the cable of the remote control to the control connector.

Connect the fan(s).

Check that the smoke-liquid bottle is always full enough. If there is any air in the pipe, it takes a long time for this to get out.

Connect the power connection to a 230 v electrical socket. Switch on the PPV Trainer. The red LED (power) will light up.

After about ten minutes, the green LED (ready) will light up.

The PPV Trainer is now ready for use.



Socket panel

Close the doors and turn on the smoke supply in the area that is to be filled with smoke.

The smoke supply is started up by means of the remote control.

The SMOKE button must be pushed in, after which a few pulses of smoke will be emitted.

The button should then be released and if necessary, pushed in again.

Bear in mind that it is easy to produce too much smoke, thus causing a great deal of residue in the rooms.



Remote control

By opening a window, rooms can be filled with smoke more quickly.

Once the fan has been connected to the socket panel, it can be switched on and off using the fan button on the remote control. If the battery power supply is used, the switch on the fan will need to be used.



Fan

4 Inspection and maintenance

Check the connecting cables before every use and have them replaced if damaged.

Clean using a non-abrasive plastic cleaner.

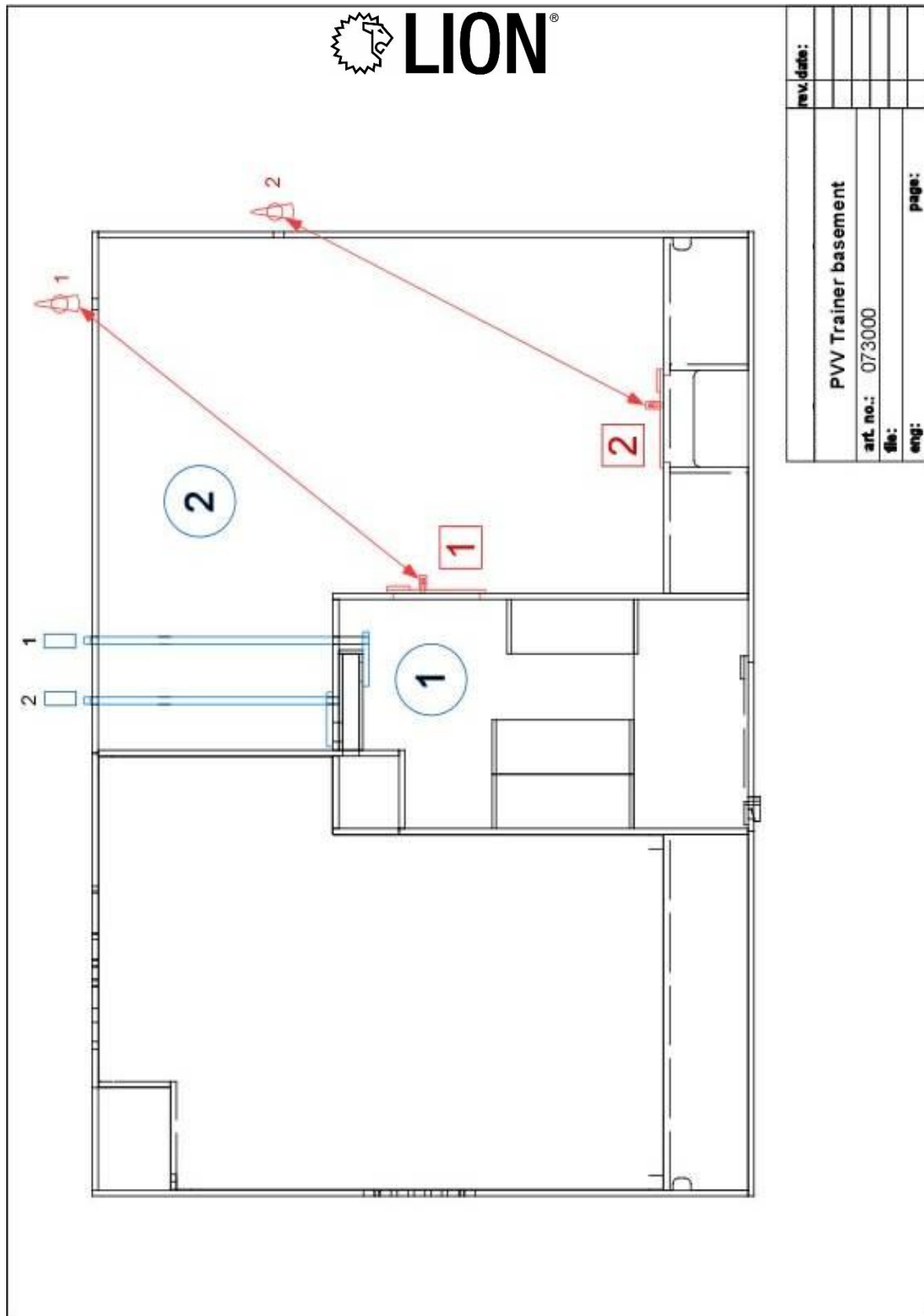
PMMA is a material that scratches easily.

When replacing the battery, for the fan, ensure that the connection clip is on the left-hand side.

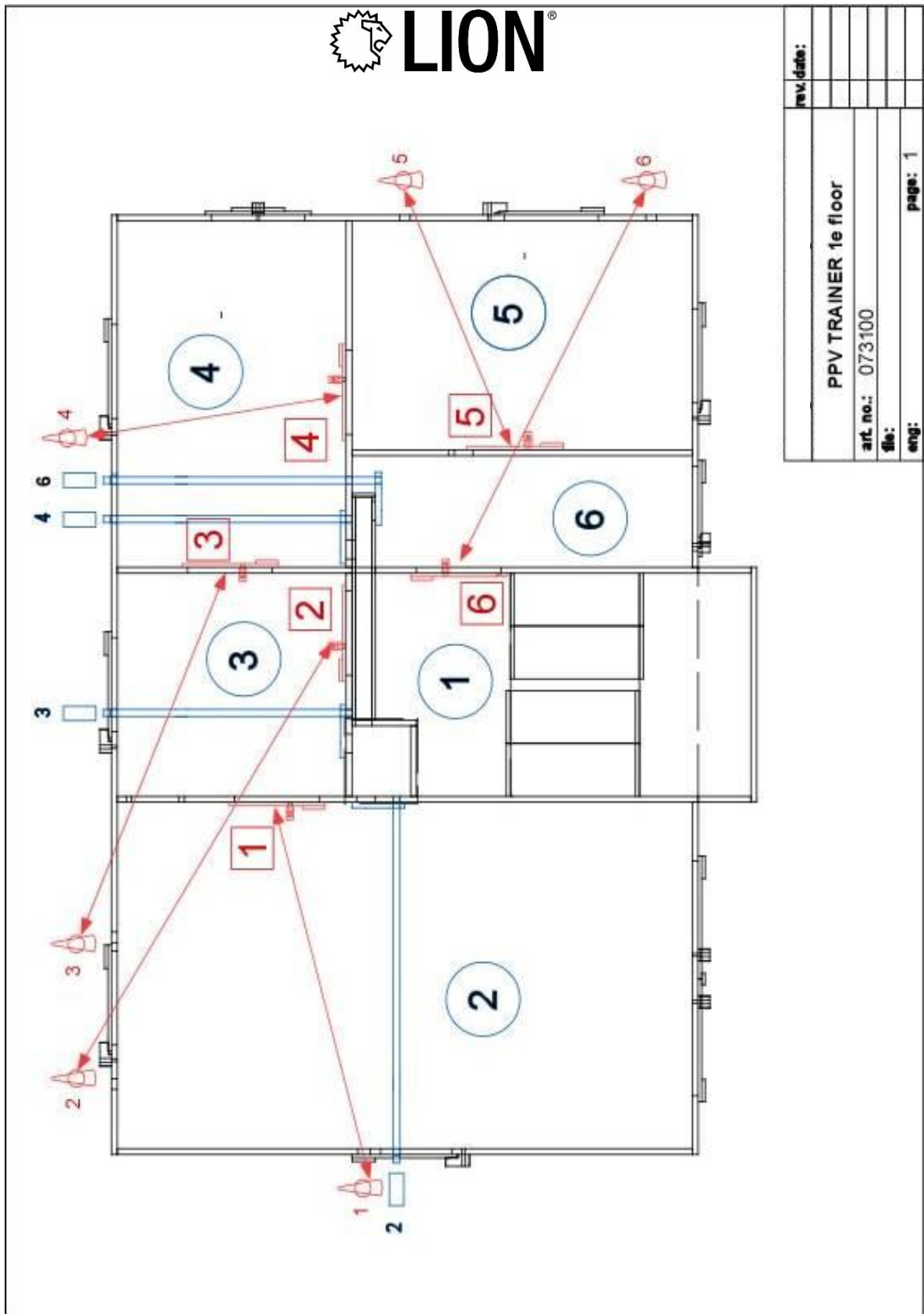


Take account of the temperature during transport: PMMA breaks very easily at temperatures below 10°C.

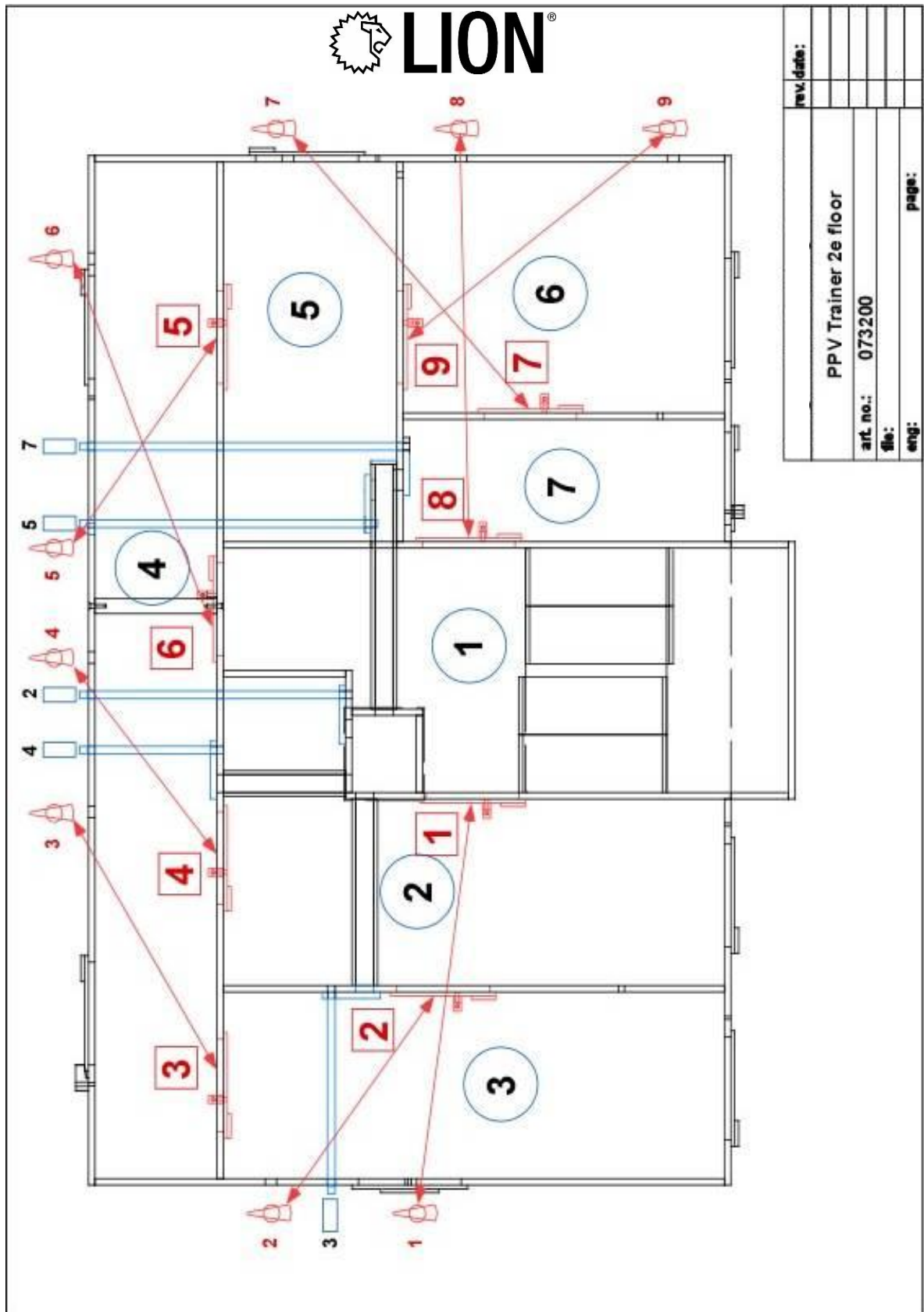
Cellar



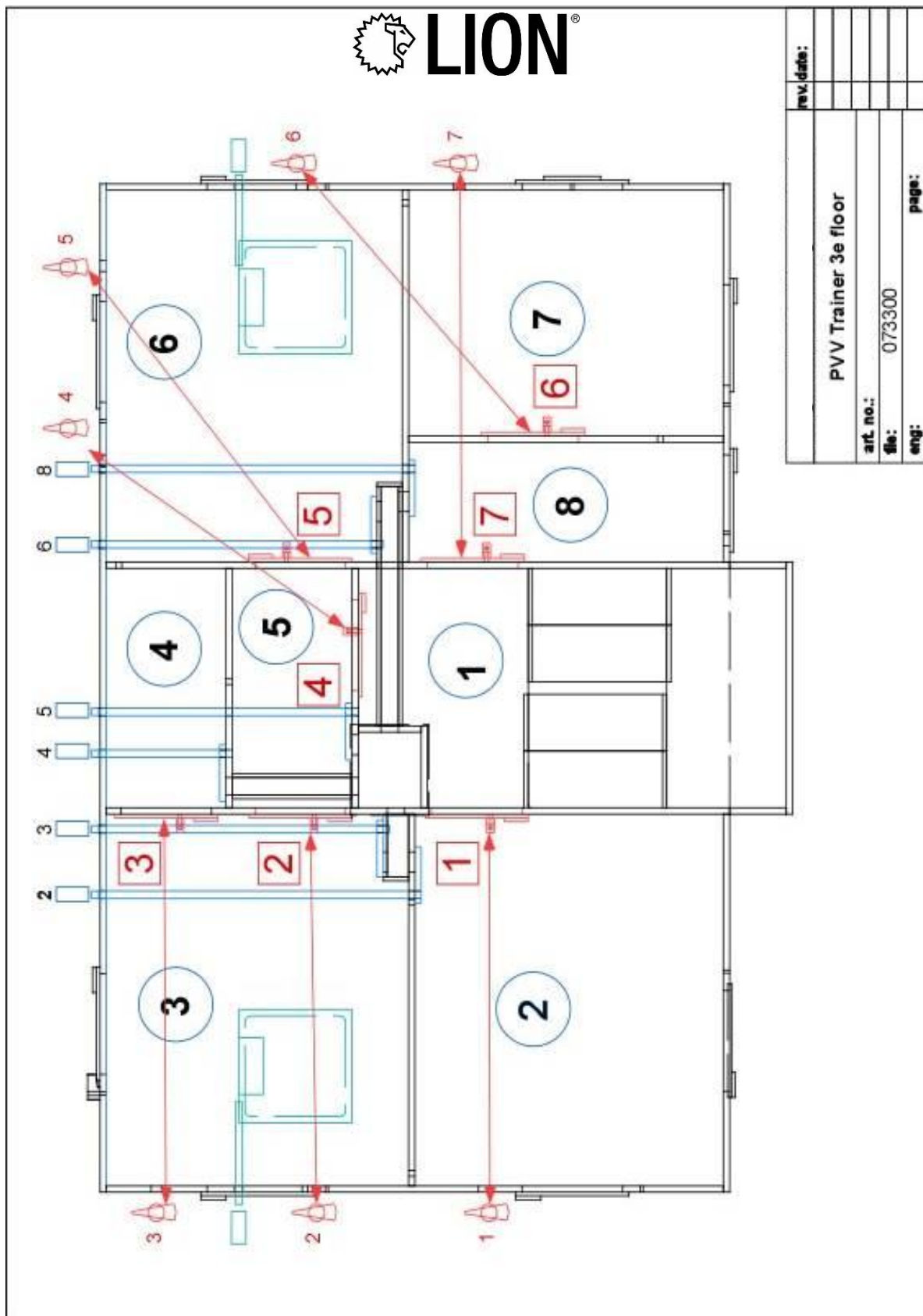
Ground floor UK



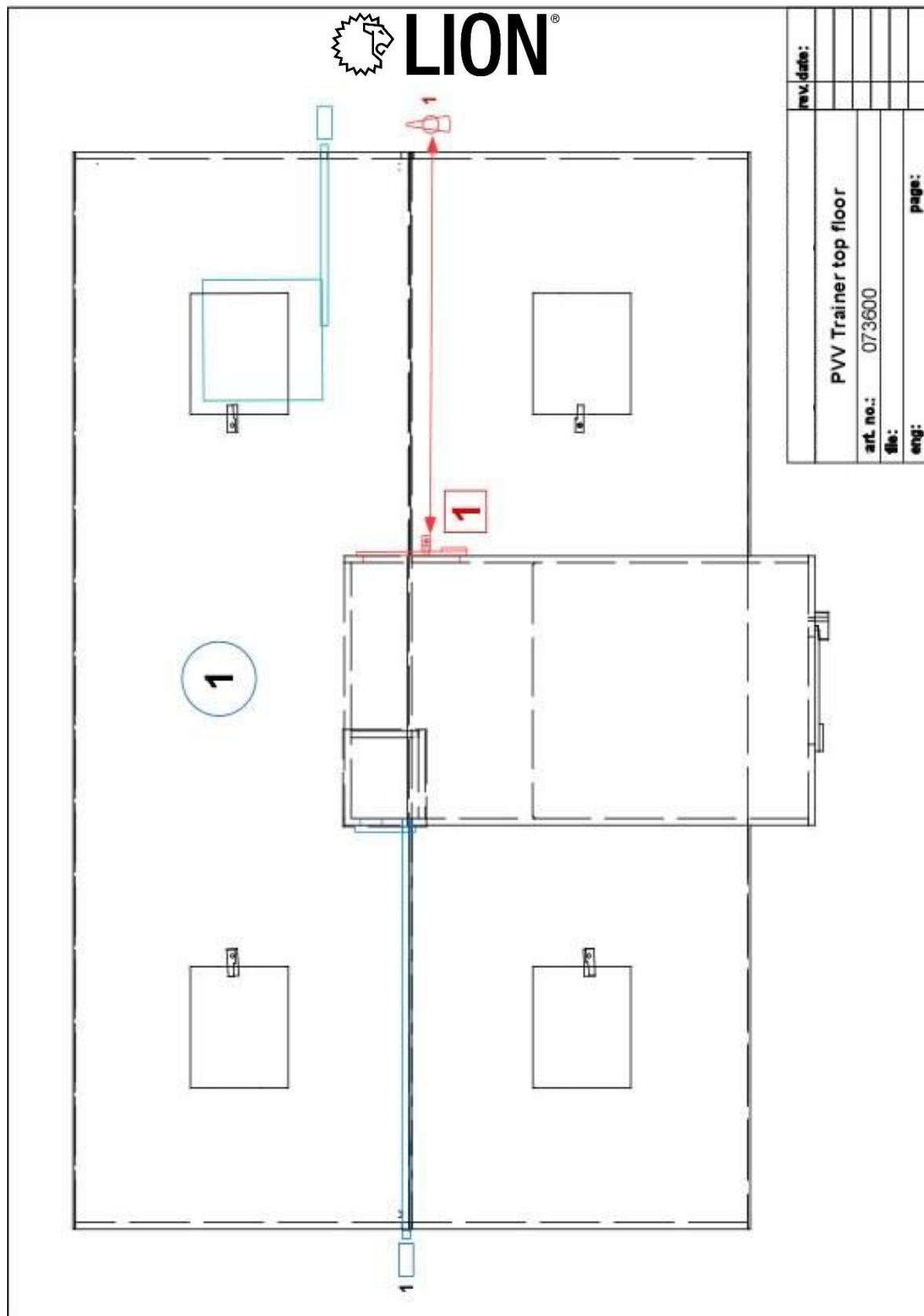
1st floor



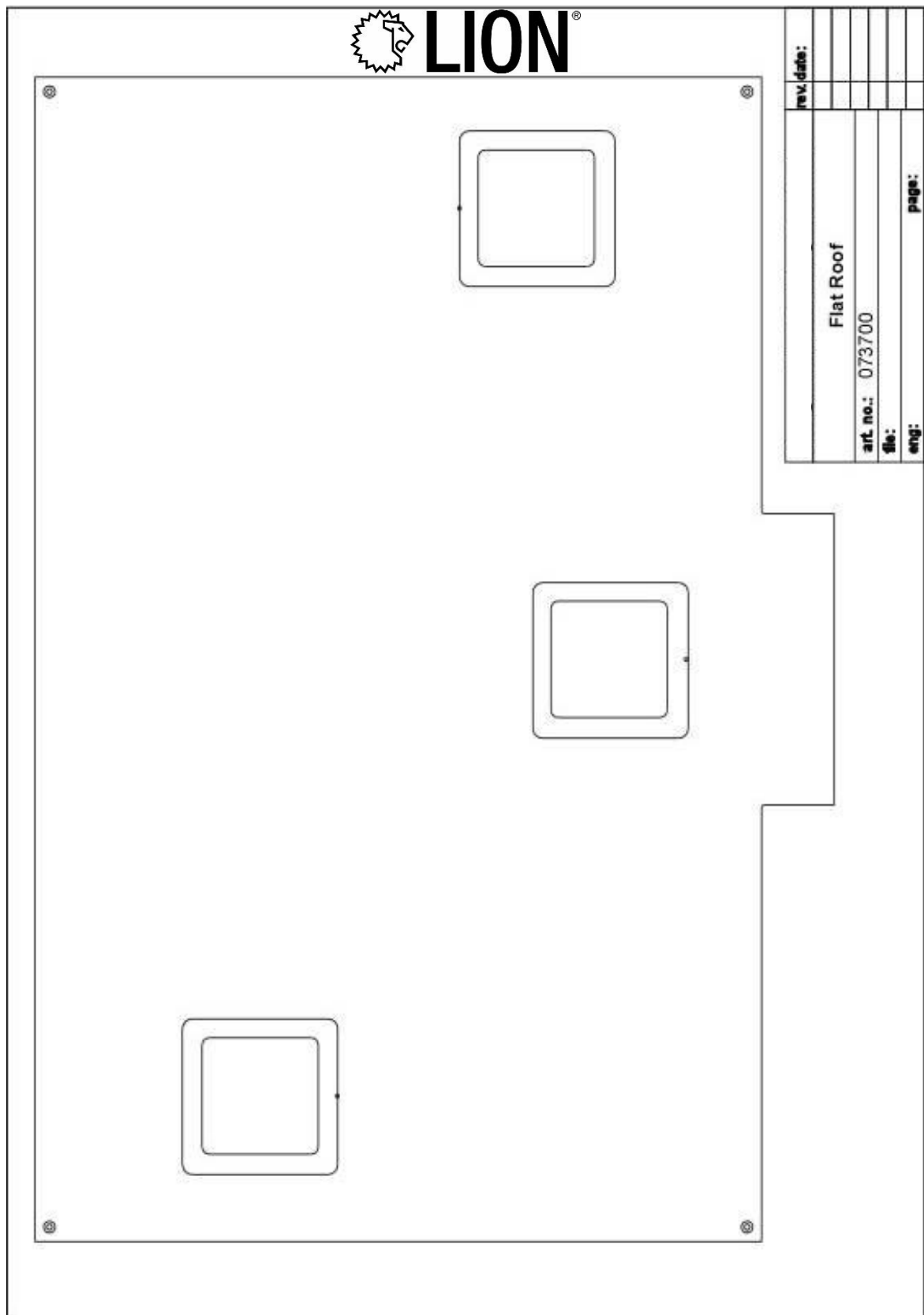
2nd floor



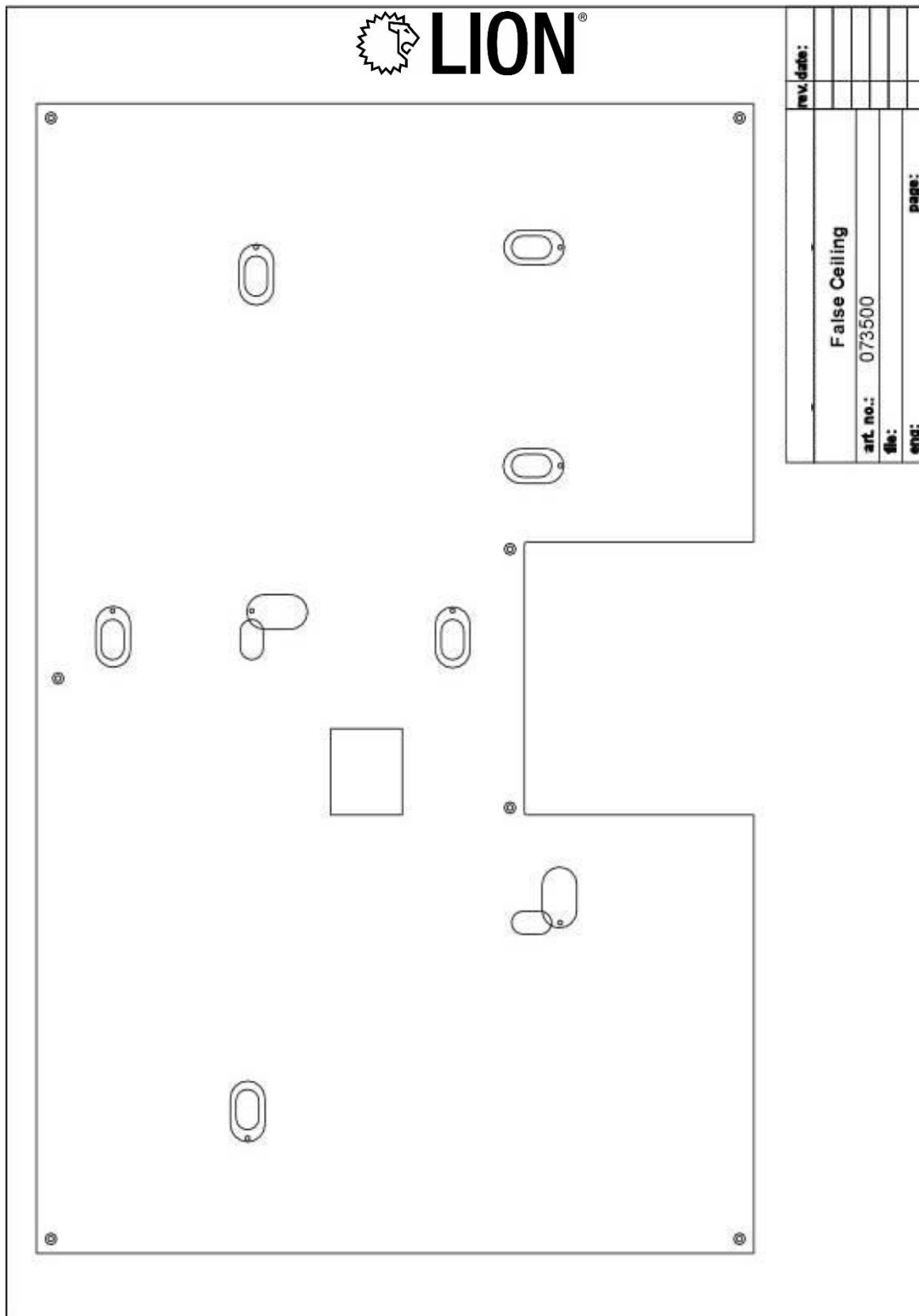
Top floor



Flat roof



False ceiling





LION Protects B.V.

Industrieweg 5
5111 ND Baarle-Nassau
the Netherlands
T: +31 (0)13 507 6800
F: +31 (0)13 507 6808
E: infoEMEA@lionprotects.com

WWW.LIONPROTECTS.COM

Version 4.4
19/12/19

© LION Group, Inc. All rights reserved.